



Road [5]

First-class results for every road



Ed. **01**
2017

GEWISS



Road [5]

OPTIMUM PERFORMANCE

SOLID

The compact design and limited dimensions of the lighting body are designed to make a discreet, well-balanced addition to all urban centres, from major cities to small towns.

HIGH PERFORMANCE

Different types of road in urban and highway contexts require different forms of light distribution. The Road [5] **device** has two types of optics to meet every installation need.



Road [5] is an elegant and practical range of LED lighting devices for urban and street applications. This range is designed to offer the best in lighting performance, simplifying device installation and maintenance and enabling maximum energy savings. **Road [5]** is the ideal solution for lighting all types of urban roads and highways, roundabouts, large outdoor areas and car parks, for new installations and as part of relamping solutions.

- urban roads
- motorway junctions
- cycle paths
- car parks
- highways
- roundabouts
- large outdoor areas

PRACTICAL

Road [5] has a simple, tool-free opening system so that wiring can be carried out with the luminaire already installed, reducing maintenance times and ensuring the safety of all operations.

CONNECTED

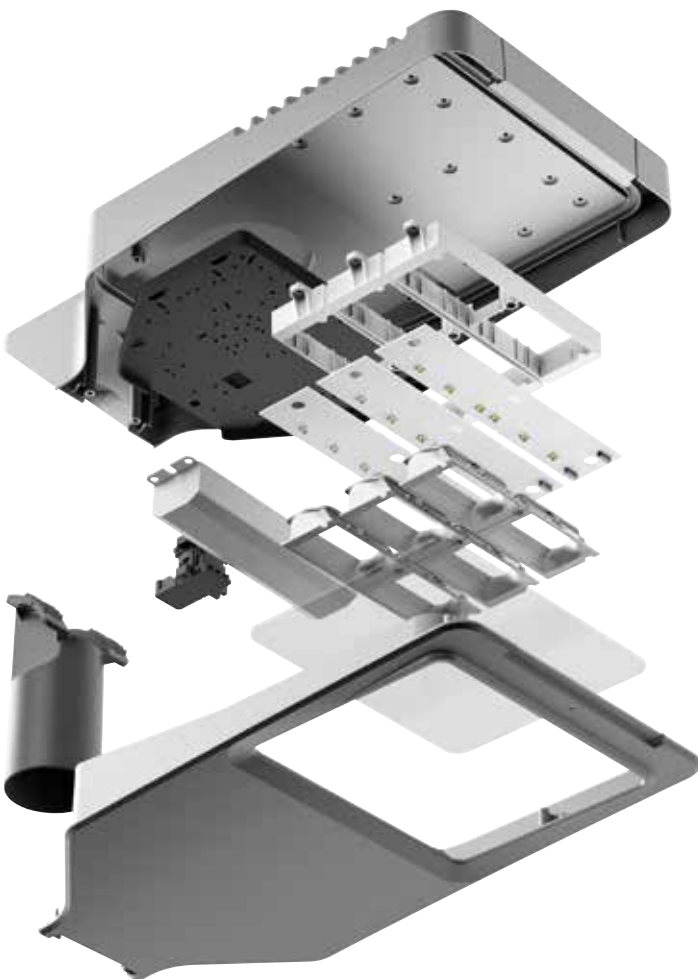
To optimise operating costs, the **Road[5]** range is designed to house the key remote management devices, adapting to existing or preferred central systems (power line communication or Wi-Fi).



Road [5]

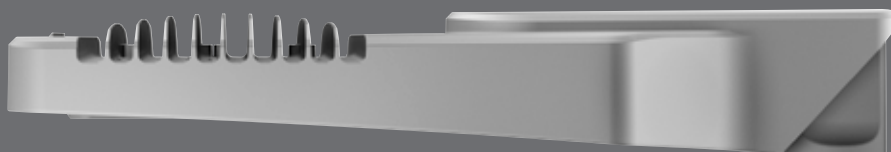
Cutting-edge technology and essential practicality

- **IP66 DEGREE OF PROTECTION.** Both the optical compartment and the entire device offer a high degree of protection (IP66), ensuring superior protection against the entry of humidity and dust, for perfect functioning in all conditions.
- **SIMPLE DESIGN AND MAXIMUM RELIABILITY.** The simple geometry of the **Road[5]** guarantees appropriate lighting on all types of urban roads and highways, blending perfectly with the environment.
- **LIGHTWEIGHT AND PRACTICAL.** The low weight of the device and the tool-free opening system significantly simplify installation and maintenance by qualified personnel.
- **SMART LIGHTING.** The perfectly proportioned electric unit compartment makes it possible to fit devices for intelligent light management inside the body of the light..

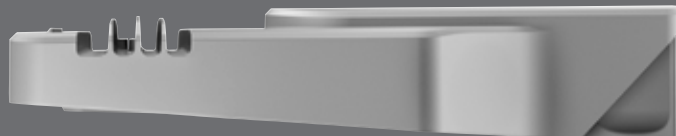




Medium 690 mm



Mini 560 mm



- **DIFFERENT POWER SUPPLY CURRENTS.** Road[5] can be supplied with different LED supply currents (0.35A, 0.7A, 0.85A and 1A), to suit any application requirement.
- **ADDITIONAL SHIELD.** The device has holes for fitting any additional shields that may be required for back-light resolution.
- **LIFESPAN AND OPERATING TEMPERATURE.** Road[5] guarantees an operating lifespan of at least 120,000h (L80B05@+25°C) for the 1A versions and 77,000h (L80B05@+25°C) for the 0.7A versions, under standard conditions of use.

- **HEAT DISSIPATION.** Thanks to a superb heat dissipation design, drive currents exceeding the standard can be achieved, whilst ensuring excellent lighting performance.
- **DEVICE IN CLASSES I AND II.** The standard device is supplied in Class II, and Class I versions are available on request.

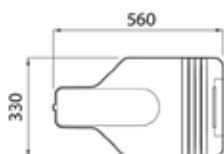
ROAD [5] - MINI - CLASS I



WIDE OPTIC



GW R5 772



STREET LIGHTING IN DIE-CAST ALUMINIUM - IP66 - FLAT GLASS - CLASS I



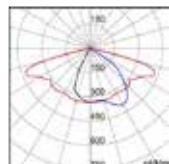
Code	Number of modules	Colour temperature	Drive current	System power	Nominal flux (lm)	Lumen output (lm)	Weight (kg)	Pack Carton
Voltage: 220/240V - 50/60 Hz - Stand alone								
GW R5 731	1 (1x3 LED)	4000 K (CRI 70)	0.35A	14W	1560	1310	6.4	1
GW R5 771	1 (1x3 LED)	4000 K (CRI 70)	0.7A	27W	3120	2620	6.4	1
GW R5 711	1 (1x3 LED)	4000 K (CRI 70)	1 A	38 W	4770	3840	6.4	1
GW R5 772	2 (2x3 LED)	4000 K (CRI 70)	0.7A	53 W	6240	5240	6.6	1
GW R5 712	2 (2x3 LED)	4000 K (CRI 70)	1 A	76 W	9540	7680	6.6	1
Voltage: 220/240V - 50/60Hz - 2-speed with self-learning								
GW R5 771 B	1 (1x3 LED)	4000 K (CRI 70)	0.7A	28 W	3120	2620	6.4	1
GW R5 711 B	1 (1x3 LED)	4000 K (CRI 70)	1 A	39W	4770	3840	6.4	1
GW R5 772 B	2 (2x3 LED)	4000 K (CRI 70)	0.7A	54 W	6240	5240	6.6	1
GW R5 712 B	2 (2x3 LED)	4000 K (CRI 70)	1 A	77 W	9540	7680	6.6	1
Voltage: 220/240 V - 50/60 Hz - Dimmable 1-10 V								
GW R5 771 M	1 (1x3 LED)	4000 K (CRI 70)	0.7A	27W	3120	2620	6.4	1
GW R5 711 M	1 (1x3 LED)	4000 K (CRI 70)	1 A	38 W	4770	3840	6.4	1
GW R5 772 M	2 (2x3 LED)	4000 K (CRI 70)	0.7A	53 W	6240	5240	6.6	1
GW R5 712 M	2 (2x3 LED)	4000 K (CRI 70)	1 A	76 W	9540	7680	6.6	1

Versions with 3000K (-30K) or 5700K (-57K) LED and with lower drive currents available upon request.

NOTE: the technical data may undergo variations due to the continuous evolution of LED technology.

The Nominal Flux refers to Tj=85°C.

Photometric distributions

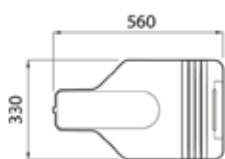


WIDE optic

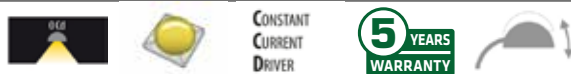
HUGE OPTIC



GW R5 672



STREET LIGHTING IN DIE-CAST ALUMINIUM - IP66 - FLAT GLASS - CLASS I

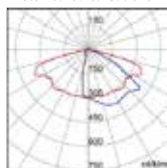


Code	Number of modules	Colour temperature	Drive current	System power	Nominal flux (lm)	Lumen output (lm)	Weight (kg)	Pack Carton
Voltage: 220/240V - 50/60 Hz - Stand alone								
GW R5 631	1 (1x3 LED)	4000 K (CRI 70)	0.35A	14W	1560	1150	6.4	1
GW R5 671	1 (1x3 LED)	4000 K (CRI 70)	0.7A	27W	3120	2300	6.4	1
GW R5 611	1 (1x3 LED)	4000 K (CRI 70)	1 A	38 W	4770	3370	6.4	1
GW R5 672	2 (2x3 LED)	4000 K (CRI 70)	0.7A	53 W	6240	4590	6.6	1
GW R5 612	2 (2x3 LED)	4000 K (CRI 70)	1 A	76 W	9540	6730	6.6	1
Voltage: 220/240V - 50/60Hz - 2-speed with self-learning								
GW R5 671 B	1 (1x3 LED)	4000 K (CRI 70)	0.7A	28 W	3120	2300	6.4	1
GW R5 611 B	1 (1x3 LED)	4000 K (CRI 70)	1 A	39W	4770	3370	6.4	1
GW R5 672 B	2 (2x3 LED)	4000 K (CRI 70)	0.7A	54 W	6240	4590	6.6	1
GW R5 612 B	2 (2x3 LED)	4000 K (CRI 70)	1 A	77 W	9540	6730	6.6	1
Voltage: 220/240 V - 50/60 Hz - Dimmable 1-10 V								
GW R5 671 M	1 (1x3 LED)	4000 K (CRI 70)	0.7A	27W	3120	2300	6.4	1
GW R5 611 M	1 (1x3 LED)	4000 K (CRI 70)	1 A	38 W	4770	3370	6.4	1
GW R5 672 M	2 (2x3 LED)	4000 K (CRI 70)	0.7A	53 W	6240	4590	6.6	1
GW R5 612 M	2 (2x3 LED)	4000 K (CRI 70)	1 A	76 W	9540	6730	6.6	1

Versions with 3000K (-30K) or 5700K (-57K) LED and with lower drive currents available upon request.

NOTE: the technical data may undergo variations due to the continuous evolution of LED technology. The Nominal Flux refers to Tj=85°C.

Photometric distributions

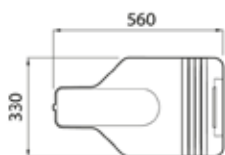


HUGE optic

CYCLE AND PEDESTRIAN OPTIC



GW R5 871 M



STREET LIGHTING IN DIE-CAST ALUMINIUM - IP66 - FLAT GLASS - CLASS I

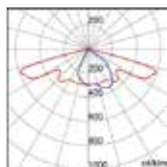


Code	Number of modules	Colour temperature	Drive current	System power	Nominal flux (lm)	Lumen output (lm)	Weight (kg)	Pack Carton
Voltage: 220/240 V - 50/60 Hz - Dimmable 1-10 V								
GW R5 871 M	1 (1x3 LED)	4000 K (CRI 70)	0.7A	27W	2350	1900	6.4	1
GW R5 872 M	2 (2x3 LED)	4000 K (CRI 70)	0.7A	53 W	4700	3800	6.4	1

Versions with 3000K (-30K) or 5700K (-57K) LED and with lower drive currents available upon request.

NOTE: the technical data may undergo variations due to the continuous evolution of LED technology. The Nominal Flux refers to Tj=85°C.

Photometric distributions



Cycle and pedestrian optic

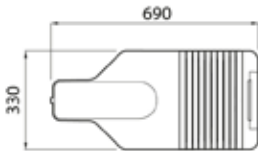
ROAD [5] - MEDIUM - CLASS I



WIDE OPTIC



GW R5 774



STREET LIGHTING IN DIE-CAST ALUMINIUM - IP66 - FLAT GLASS - CLASS I



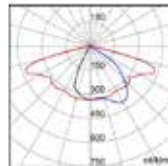
Code	Number of modules	Colour temperature	Drive current	System power	Nominal flux (lm)	Lumen output (lm)	Weight (kg)	Pack Carton
Voltage: 220/240V - 50/60 Hz - Stand alone								
GW R5 773	3 (3x3 LED)	4000 K (CRI 70)	0.7A	79 W	9360	7860	8	1
GW R5 713	3 (3x3 LED)	4000 K (CRI 70)	1 A	113 W	14310	11520	8	1
GW R5 774	4 (4x3 LED)	4000 K (CRI 70)	0.7A	106 W	12480	10480	8.4	1
GW R5 714	4 (4x3 LED)	4000 K (CRI 70)	1 A	151 W	19080	15360	8.4	1
GW R5 775	5 (5x3 LED)	4000 K (CRI 70)	0.7A	132 W	15600	13100	8.8	1
GW R5 715	5 (5x3 LED)	4000 K (CRI 70)	0.85A	159 W	21230	17090	8.8	1
GW R5 776	6 (6x3 LED)	4000 K (CRI 70)	0.7A	159 W	18720	15730	9.1	1
GW R5 716	6 (6x3 LED)	4000 K (CRI 70)	0.85A	185W	24330	19580	9.1	1
Voltage: 220/240V - 50/60Hz - 2-speed with self-learning								
GW R5 773 B	3 (3x3 LED)	4000 K (CRI 70)	0.7A	81 W	9360	7860	8	1
GW R5 713 B	3 (3x3 LED)	4000 K (CRI 70)	1 A	115 W	14310	11520	8	1
GW R5 774 B	4 (4x3 LED)	4000 K (CRI 70)	0.7A	108 W	12480	10480	8.4	1
GW R5 714 B	4 (4x3 LED)	4000 K (CRI 70)	1 A	153 W	19080	15360	8.4	1
GW R5 775 B	5 (5x3 LED)	4000 K (CRI 70)	0.7A	134 W	15600	13100	8.8	1
GW R5 715 B	5 (5x3 LED)	4000 K (CRI 70)	0.85A	161 W	21230	17090	8.8	1
GW R5 776 B	6 (6x3 LED)	4000 K (CRI 70)	0.7A	161 W	18720	15730	9.1	1
GW R5 716 B	6 (6x3 LED)	4000 K (CRI 70)	0.85A	187W	24330	19580	9.1	1
Voltage: 220/240 V - 50/60 Hz - Dimmable 1-10 V								
GW R5 773 M	3 (3x3 LED)	4000 K (CRI 70)	0.7A	79 W	9360	7860	8	1
GW R5 713 M	3 (3x3 LED)	4000 K (CRI 70)	1 A	113 W	14310	11520	8	1
GW R5 774 M	4 (4x3 LED)	4000 K (CRI 70)	0.7A	106 W	12480	10480	8.4	1
GW R5 714 M	4 (4x3 LED)	4000 K (CRI 70)	1 A	113 W	19080	15360	8.4	1
GW R5 775 M	5 (5x3 LED)	4000 K (CRI 70)	0.7A	132 W	15600	13100	8.8	1
GW R5 715 M	5 (5x3 LED)	4000 K (CRI 70)	0.85A	159 W	21230	17090	8.8	1
GW R5 776 M	6 (6x3 LED)	4000 K (CRI 70)	0.7A	159 W	18720	15730	9.1	1
GW R5 716 M	6 (6x3 LED)	4000 K (CRI 70)	0.85A	185W	24330	19580	9.1	1

Versions with 3000K (-30K) or 5700K (-57K) LED and with lower drive currents available upon request.

NOTE: the technical data may undergo variations due to the continuous evolution of LED technology.

The Nominal Flux refers to Tj=85°C.

Photometric distributions

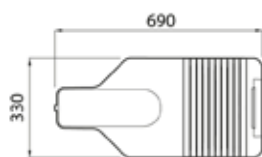


WIDE optic

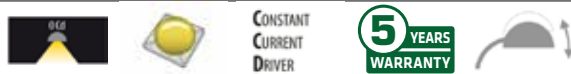
HUGE OPTIC



GW R5 674



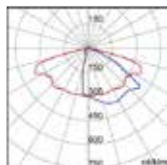
STREET LIGHTING IN DIE-CAST ALUMINIUM - IP66 - FLAT GLASS - CLASS I



Code	Number of modules	Colour temperature	Drive current	System power	Nominal flux (lm)	Lumen output (lm)	Weight (kg)	Pack Carton
Voltage: 220/240V - 50/60 Hz - Stand alone								
GW R5 673	3 (3x3 LED)	4000 K (CRI 70)	0.7A	79 W	9360	6890	8	1
GW R5 613	3 (3x3 LED)	4000 K (CRI 70)	1 A	113 W	14310	10100	8	1
GW R5 674	4 (4x3 LED)	4000 K (CRI 70)	0.7A	106 W	12480	9190	8.4	1
GW R5 614	4 (4x3 LED)	4000 K (CRI 70)	1 A	151 W	19080	13460	8.4	1
GW R5 675	5 (5x3 LED)	4000 K (CRI 70)	0.7A	132 W	15600	11480	8.8	1
GW R5 615	5 (5x3 LED)	4000 K (CRI 70)	0.85A	159 W	21227	14974	8.8	1
GW R5 676	6 (6x3 LED)	4000 K (CRI 70)	0.7A	159 W	18720	13780	9.1	1
GW R5 616	6 (6x3 LED)	4000 K (CRI 70)	0.85A	185W	24327	17162	9.1	1
Voltage: 220/240V - 50/60Hz - 2-speed with self-learning								
GW R5 673 B	3 (3x3 LED)	4000 K (CRI 70)	0.7A	81 W	9360	6890	8	1
GW R5 613 B	3 (3x3 LED)	4000 K (CRI 70)	1 A	115 W	14310	10100	8	1
GW R5 674 B	4 (4x3 LED)	4000 K (CRI 70)	0.7A	108 W	12480	9190	8.4	1
GW R5 614 B	4 (4x3 LED)	4000 K (CRI 70)	1 A	153 W	19080	13460	8.4	1
GW R5 675 B	5 (5x3 LED)	4000 K (CRI 70)	0.7A	134 W	15600	11480	8.8	1
GW R5 615 B	5 (5x3 LED)	4000 K (CRI 70)	0.85A	161 W	21230	14970	8.8	1
GW R5 676 B	6 (6x3 LED)	4000 K (CRI 70)	0.7A	161 W	18720	13780	9.1	1
GW R5 616 B	6 (6x3 LED)	4000 K (CRI 70)	0.85A	187W	24330	17160	9.1	1
Voltage: 220/240 V - 50/60 Hz - Dimmable 1-10 V								
GW R5 673 M	3 (3x3 LED)	4000 K (CRI 70)	0.7A	79 W	9360	6890	8	1
GW R5 613 M	3 (3x3 LED)	4000 K (CRI 70)	1 A	113 W	14310	10100	8	1
GW R5 674 M	4 (4x3 LED)	4000 K (CRI 70)	0.7A	106 W	12480	9190	8.4	1
GW R5 614 M	4 (4x3 LED)	4000 K (CRI 70)	1 A	113 W	19080	13460	8.4	1
GW R5 675 M	5 (5x3 LED)	4000 K (CRI 70)	0.7A	132 W	15600	11480	8.8	1
GW R5 615 M	5 (5x3 LED)	4000 K (CRI 70)	0.85A	159 W	21230	14970	8.8	1
GW R5 676 M	6 (6x3 LED)	4000 K (CRI 70)	0.7A	159 W	18720	13780	9.1	1
GW R5 616 M	6 (6x3 LED)	4000 K (CRI 70)	0.85A	185W	24330	17160	9.1	1

Versions with 3000K (-30K) or 5700K (-57K) LED and with lower drive currents available upon request.
NOTE: the technical data may undergo variations due to the continuous evolution of LED technology.
 The Nominal Flux refers to Tj=85°C.

Photometric distributions



HUGE optic

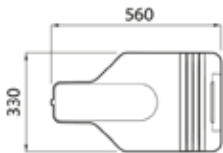
ROAD [5] - MINI - CLASS II



WIDE OPTIC



GW R5 272



STREET LIGHTING IN DIE-CAST ALUMINIUM - IP66 - FLAT GLASS



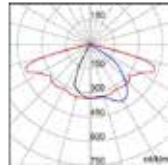
Code	Number of modules	Colour temperature	Drive current	System power	Nominal flux (lm)	Lumen output (lm)	Weight (kg)	Pack Carton
Voltage: 220/240V - 50/60 Hz - Stand alone								
GW R5 231	1 (1x3 LED)	4000 K (CRI 70)	0.35A	14W	1560	1310	6.4	1
GW R5 271	1 (1x3 LED)	4000 K (CRI 70)	0.7A	27W	3120	2620	6.4	1
GW R5 211	1 (1x3 LED)	4000 K (CRI 70)	1 A	38 W	4770	3840	6.4	1
GW R5 272	2 (2x3 LED)	4000 K (CRI 70)	0.7A	53 W	6240	5240	6.6	1
GW R5 212	2 (2x3 LED)	4000 K (CRI 70)	1 A	76 W	9540	7680	6.6	1
Voltage: 220/240V - 50/60Hz - 2-speed with self-learning								
GW R5 271 B	1 (1x3 LED)	4000 K (CRI 70)	0.7A	28 W	3120	2620	6.4	1
GW R5 211 B	1 (1x3 LED)	4000 K (CRI 70)	1 A	39W	4770	3840	6.4	1
GW R5 272 B	2 (2x3 LED)	4000 K (CRI 70)	0.7A	54 W	6240	5240	6.6	1
GW R5 212 B	2 (2x3 LED)	4000 K (CRI 70)	1 A	77 W	9540	7680	6.6	1
Voltage: 220/240 V - 50/60 Hz - Dimmable 1-10 V								
GW R5 271 M	1 (1x3 LED)	4000 K (CRI 70)	0.7A	27W	3120	2620	6.4	1
GW R5 211 M	1 (1x3 LED)	4000 K (CRI 70)	1 A	38 W	4770	3840	6.4	1
GW R5 272 M	2 (2x3 LED)	4000 K (CRI 70)	0.7A	53 W	6240	5240	6.6	1
GW R5 212 M	2 (2x3 LED)	4000 K (CRI 70)	1 A	76 W	9540	7680	6.6	1

Versions with 3000K (-30K) or 5700K (-57K) LED and with lower drive currents available upon request.

NOTE: the technical data may undergo variations due to the continuous evolution of LED technology.

The Nominal Flux refers to Tj=85°C.

Photometric distributions

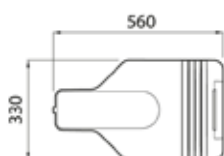


WIDE optic

HUGE OPTIC



GW R5 172



STREET LIGHTING IN DIE-CAST ALUMINIUM - IP66 - FLAT GLASS - CLASS II

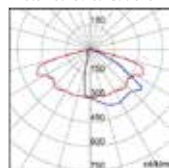


Code	Number of modules	Colour temperature	Drive current	System power	Nominal flux (lm)	Lumen output (lm)	Weight (kg)	Pack Carton
Voltage: 220/240V - 50/60 Hz - Stand alone								
GW R5 131	1 (1x3 LED)	4000 K (CRI 70)	0.35A	14W	1560	1150	6.4	1
GW R5 171	1 (1x3 LED)	4000 K (CRI 70)	0.7A	27W	3120	2300	6.4	1
GW R5 111	1 (1x3 LED)	4000 K (CRI 70)	1 A	38 W	4770	3370	6.4	1
GW R5 172	2 (2x3 LED)	4000 K (CRI 70)	0.7A	53 W	6240	4590	6.6	1
GW R5 112	2 (2x3 LED)	4000 K (CRI 70)	1 A	76 W	9540	6730	6.6	1
Voltage: 220/240V - 50/60Hz - 2-speed with self-learning								
GW R5 171 B	1 (1x3 LED)	4000 K (CRI 70)	0.7A	28 W	3120	2300	6.4	1
GW R5 111 B	1 (1x3 LED)	4000 K (CRI 70)	1 A	39W	4770	3370	6.4	1
GW R5 172 B	2 (2x3 LED)	4000 K (CRI 70)	0.7A	54 W	6240	4590	6.6	1
GW R5 112 B	2 (2x3 LED)	4000 K (CRI 70)	1 A	77 W	9540	6730	6.6	1
Voltage: 220/240 V - 50/60 Hz - Dimmable 1-10 V								
GW R5 171 M	1 (1x3 LED)	4000 K (CRI 70)	0.7A	27W	3120	2300	6.4	1
GW R5 111 M	1 (1x3 LED)	4000 K (CRI 70)	1 A	38 W	4770	3370	6.4	1
GW R5 172 M	2 (2x3 LED)	4000 K (CRI 70)	0.7A	53 W	6240	4590	6.6	1
GW R5 112 M	2 (2x3 LED)	4000 K (CRI 70)	1 A	76 W	9540	6730	6.6	1

Versions with 3000K (-30K) or 5700K (-57K) LED and with lower drive currents available upon request.

NOTE: the technical data may undergo variations due to the continuous evolution of LED technology. The Nominal Flux refers to Tj=85°C.

Photometric distributions



HUGE optic

CYCLE AND PEDESTRIAN OPTIC



GW R5 371 M

STREET LIGHTING IN DIE-CAST ALUMINIUM - IP66 - FLAT GLASS - CLASS II



CONSTANT
CURRENT
DRIVER

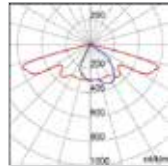
5 YEARS
WARRANTY



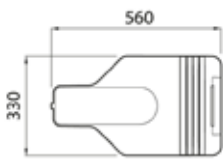
Code	Number of modules	Colour temperature	Drive current	System power	Nominal flux (lm)	Lumen output (lm)	Weight (kg)	Pack Carton
Voltage: 220/240 V - 50/60 Hz - Dimmable 1-10 V								
GW R5 371 M	1 (1x3 LED)	4000 K (CRI 70)	0.7A	27W	2350	1900	6.4	1
GW R5 372 M	2 (2x3 LED)	4000 K (CRI 70)	0.7A	53 W	4700	3800	6.6	1

Versions with 3000K (-30K) or 5700K (-57K) LED and with lower drive currents available upon request.
NOTE: the technical data may undergo variations due to the continuous evolution of LED technology.
 The Nominal Flux refers to Tj=85°C.

Photometric distributions



Cycle and pedestrian optic



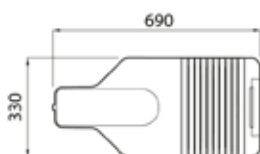
ROAD [5] - MEDIUM - CLASS II



WIDE OPTIC



GW R5 274



STREET LIGHTING IN DIE-CAST ALUMINIUM - IP66 - FLAT GLASS



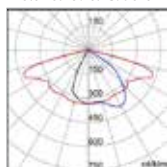
Code	Number of modules	Colour temperature	Drive current	System power	Nominal flux (lm)	Lumen output (lm)	Weight (kg)	Pack Carton
Voltage: 220/240V - 50/60 Hz - Stand alone								
GW R5 273	3 (3x3 LED)	4000 K (CRI 70)	0.7A	79 W	9360	7860	8	1
GW R5 213	3 (3x3 LED)	4000 K (CRI 70)	1 A	113 W	14310	11520	8	1
GW R5 274	4 (4x3 LED)	4000 K (CRI 70)	0.7A	106 W	12480	10480	8.4	1
GW R5 214	4 (4x3 LED)	4000 K (CRI 70)	1 A	151 W	19080	15360	8.4	1
GW R5 275	5 (5x3 LED)	4000 K (CRI 70)	0.7A	132 W	15600	13100	8.8	1
GW R5 215	5 (5x3 LED)	4000 K (CRI 70)	0.85A	159 W	21230	17090	8.8	1
GW R5 276	6 (6x3 LED)	4000 K (CRI 70)	0.7A	159 W	18720	15730	9.1	1
GW R5 216	6 (6x3 LED)	4000 K (CRI 70)	0.85A	185W	24330	19580	9.1	1
Voltage: 220/240V - 50/60Hz - 2-speed with self-learning								
GW R5 273 B	3 (3x3 LED)	4000 K (CRI 70)	0.7A	81 W	9360	7860	8	1
GW R5 213 B	3 (3x3 LED)	4000 K (CRI 70)	1 A	115 W	14310	11520	8	1
GW R5 274 B	4 (4x3 LED)	4000 K (CRI 70)	0.7A	108 W	12480	10480	8.4	1
GW R5 214 B	4 (4x3 LED)	4000 K (CRI 70)	1 A	153 W	19080	15360	8.4	1
GW R5 275 B	5 (5x3 LED)	4000 K (CRI 70)	0.7A	134 W	15600	13100	8.8	1
GW R5 215 B	5 (5x3 LED)	4000 K (CRI 70)	0.85A	161 W	21230	17090	8.8	1
GW R5 276 B	6 (6x3 LED)	4000 K (CRI 70)	0.7A	161 W	18720	15730	9.1	1
GW R5 216 B	6 (6x3 LED)	4000 K (CRI 70)	0.85A	187W	24330	19580	9.1	1
Voltage: 220/240 V - 50/60 Hz - Dimmable 1-10 V								
GW R5 273 M	3 (3x3 LED)	4000 K (CRI 70)	0.7A	79 W	9360	7860	8	1
GW R5 213 M	3 (3x3 LED)	4000 K (CRI 70)	1 A	113 W	14310	11520	8	1
GW R5 274 M	4 (4x3 LED)	4000 K (CRI 70)	0.7A	106 W	12480	10480	8.4	1
GW R5 214 M	4 (4x3 LED)	4000 K (CRI 70)	1 A	113 W	19080	15360	8.4	1
GW R5 275 M	5 (5x3 LED)	4000 K (CRI 70)	0.7A	132 W	15600	13100	8.8	1
GW R5 215 M	5 (5x3 LED)	4000 K (CRI 70)	0.85A	159 W	21230	17090	8.8	1
GW R5 276 M	6 (6x3 LED)	4000 K (CRI 70)	0.7A	159 W	18720	15730	9.1	1
GW R5 216 M	6 (6x3 LED)	4000 K (CRI 70)	0.85A	185W	24330	19580	9.1	1

Versions with 3000K (-30K) or 5700K (-57K) LED and with lower drive currents available upon request.

NOTE: the technical data may undergo variations due to the continuous evolution of LED technology.

The Nominal Flux refers to Tj=85°C.

Photometric distributions

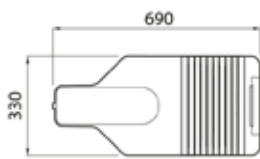


WIDE optic

HUGE OPTIC



GW R5 174



STREET LIGHTING IN DIE-CAST ALUMINIUM - IP66 - FLAT GLASS



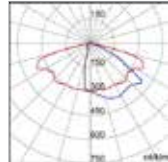
Code	Number of modules	Colour temperature	Drive current	System power	Nominal flux (lm)	Lumen output (lm)	Weight (kg)	Pack Carton
Voltage: 220/240V - 50/60 Hz - Stand alone								
GW R5 173	3 (3x3 LED)	4000 K (CRI 70)	0.7A	79 W	9360	6890	8	1
GW R5 113	3 (3x3 LED)	4000 K (CRI 70)	1 A	113 W	14310	10100	8	1
GW R5 174	4 (4x3 LED)	4000 K (CRI 70)	0.7A	106 W	12480	9190	8.4	1
GW R5 114	4 (4x3 LED)	4000 K (CRI 70)	1 A	151 W	19080	13460	8.4	1
GW R5 175	5 (5x3 LED)	4000 K (CRI 70)	0.7A	132 W	15600	11480	8.8	1
GW R5 115	5 (5x3 LED)	4000 K (CRI 70)	0.85A	159 W	21230	14970	8.8	1
GW R5 176	6 (6x3 LED)	4000 K (CRI 70)	0.7A	159 W	18720	13780	9.1	1
GW R5 116	6 (6x3 LED)	4000 K (CRI 70)	0.85A	185W	24330	17160	9.1	1
Voltage: 220/240V - 50/60Hz - 2-speed with self-learning								
GW R5 173 B	3 (3x3 LED)	4000 K (CRI 70)	0.7A	81 W	9360	6890	8	1
GW R5 113 B	3 (3x3 LED)	4000 K (CRI 70)	1 A	115 W	14310	10100	8	1
GW R5 174 B	4 (4x3 LED)	4000 K (CRI 70)	0.7A	108 W	12480	9190	8.4	1
GW R5 114 B	4 (4x3 LED)	4000 K (CRI 70)	1 A	153 W	19080	13460	8.4	1
GW R5 175 B	5 (5x3 LED)	4000 K (CRI 70)	0.7A	134 W	15600	11480	8.8	1
GW R5 115 B	5 (5x3 LED)	4000 K (CRI 70)	0.85A	161 W	21230	14970	8.8	1
GW R5 176 B	6 (6x3 LED)	4000 K (CRI 70)	0.7A	161 W	18720	13780	9.1	1
GW R5 116 B	6 (6x3 LED)	4000 K (CRI 70)	0.85A	187W	24330	17160	9.1	1
Voltage: 220/240 V - 50/60 Hz - Dimmable 1-10 V								
GW R5 173 M	3 (3x3 LED)	4000 K (CRI 70)	0.7A	79 W	9360	6890	8	1
GW R5 113 M	3 (3x3 LED)	4000 K (CRI 70)	1 A	113 W	14310	10100	8	1
GW R5 174 M	4 (4x3 LED)	4000 K (CRI 70)	0.7A	106 W	12480	9190	8.4	1
GW R5 114 M	4 (4x3 LED)	4000 K (CRI 70)	1 A	113 W	19080	13460	8.4	1
GW R5 175 M	5 (5x3 LED)	4000 K (CRI 70)	0.7A	132 W	15600	11480	8.8	1
GW R5 115 M	5 (5x3 LED)	4000 K (CRI 70)	0.85A	159 W	21230	14970	8.8	1
GW R5 176 M	6 (6x3 LED)	4000 K (CRI 70)	0.7A	159 W	18720	13780	9.1	1
GW R5 116 M	6 (6x3 LED)	4000 K (CRI 70)	0.85A	185W	24330	17160	9.1	1

Versions with 3000K (-30K) or 5700K (-57K) LED and with lower drive currents available upon request.

NOTE: the technical data may undergo variations due to the continuous evolution of LED technology.

The Nominal Flux refers to Tj=85°C.

Photometric distributions



HUGE optic

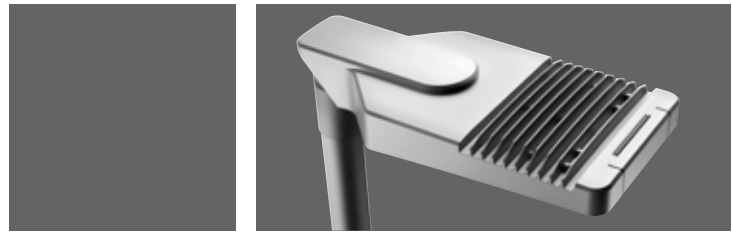
GEWISS

GEWISS S.p.A.

Registered Office: Via A. Volta, 1
24069 CENATE SOTTO BG - Italy
T. +39 035 946 111 - F. +39 035 945 222
gewiss@gewiss.com - www.gewiss.com

Sole Shareholder company - Bergamo Register of Companies / VAT/Tax Code (IT) 00385040167
REA 107496 - Share capital 60,000,000.00 EUR fully paid up.

PB 22447 EN - 11-17



Visit www.gewiss.com and follow us on:

